



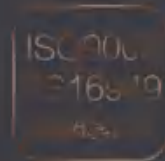
WATER PUMP BEARINGS

汽车水泵轴连轴承

We specializing in produce water pump bearing 10 years,
with 2000 types including W,W-S,WN,WN-S,WS,WNS,WK,WKN series.
High frequency ball-ball water pump bearing and angular contact one ball-one roller
water pump bearing are our strength.
working life reach 120000 kilometers.
Have long cooperation with famous Auto parts manufacturer,
Annual quantity 4 Millions Pieces.

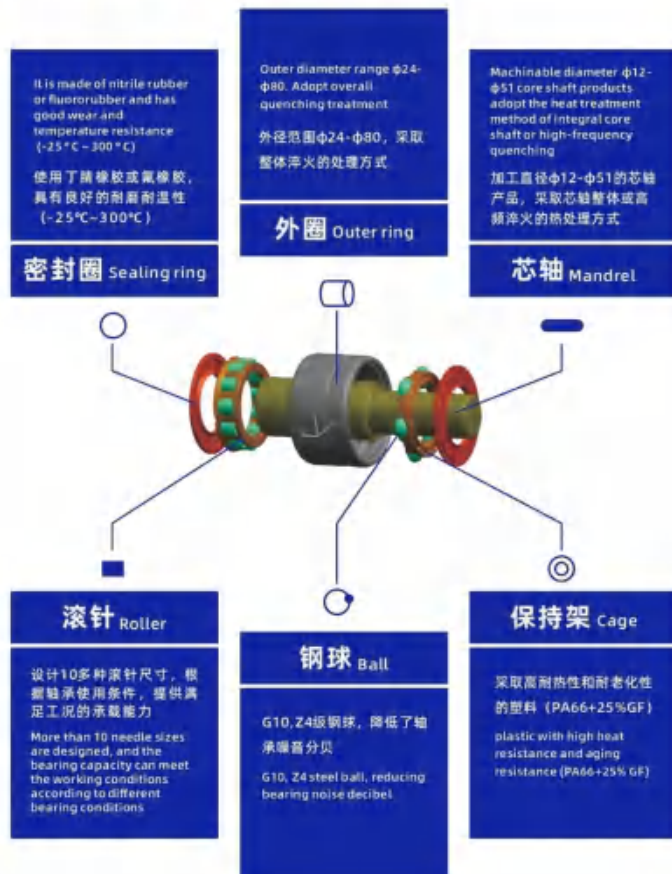
我们专注水泵轴连轴承10年，可生产2000余种型号。

高频处理双球WB系列水泵轴承，角接触一球一滚子WR系列水泵轴承。
使用寿命达到12万公里。长期与国内知名汽配公司配套，年产量达400万套。



WATER PUMP BEARINGS

汽车水泵轴连轴承



WR/WRR系列

一球一柱或二柱一球混合结构，主要使用低速重载等重卡车上。

WR/WRR Series

One ball and one column or two columns and one ball hybrid structure, mainly used on low-speed heavy haul constant weight trucks



WB系列

双球结构，主要使用高速轻载乘用车上。

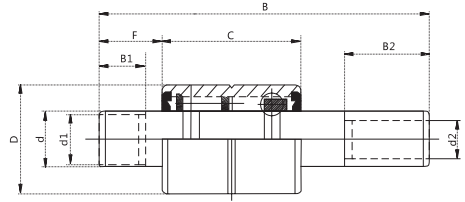
WB Series

Double ball structure, mainly used on high-speed light passenger vehicles.



WATER PUMP BEARINGS

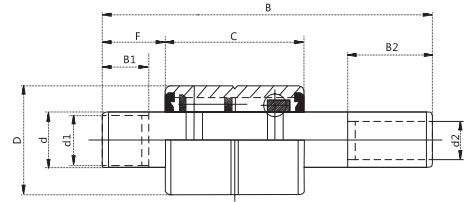
汽车水泵轴连轴承



SXM	NSK	FAG	d	D	C	B	F	d1	B1	d2	B2
WB122478		WS2307	12	24	27	78	13.5				
WB1226080			12	26	30	80	14.5				
WB1226082		BWF26-45R	12	26	30	81.99	17.6				
WB1226090		BWF26-36-A-R	12	26	38.9	89.5	16.51				
WB122692	BWF26-36A	WS2362	12	26	40	91.9	17				
WB1226093	BWF26-26R	WS2364-4	12	26	38.9	92.51	16.51				
WB1226094	BWF26-14RUJ	WS2372	12	26	38.9	94.49	21.5				
WB1226098			12	26	38.9	97.99	16.5				
WB1226099			12	26	38.9	99	25				
WB1226102		WS2401	12	26	40	102	27				
WB1226104	BWF26-11RUJ	WS2407	12	26	38.9	103.51	21.5				
WB1224085			12	24	27	84.5	21				
WB153087		WS2344-1	15	30	36	87.5	13.5				
WB153087A		WS2344-4	15	30	36	87.5	13.5			12	34.3
WB153098		WS2383	15	30	38.86	97.5	23				
WB1530107			15	30	38.9	107	27.5	12	38		
WB1530109			15	30	52	109	18				
WB1530116			15	30	38.9	116	27	12	38		
WB163066		WS2263	15.918	30	38.9	65.8	25				
WB163067		WS2262	15.918	30	27	66.5	8.4	13	6.6	12	30.3
WB11630069	885198	WS2272	15.918	30	38.9	69.09	4				
WB163070		WS2275.T1528	15.918	30	38.9	70	6.4				
WB163071		WS2279	15.918	30	27	71	9.4			12	32.5
WB163073		W2289-1.T1805	15.918	30	38.9	73.4	4.1				
WB1630073	885154	W2289	15.918	30	38.9	73.41	4				
WB163079		WS2311	15.918	30	27	79	13.7	0	0	0	0
WB1630080			15.918	30	30	79.5	13			12	34
WB1630083	885165	W2325	15.918	30	38.9	82.5	4				
WB1630083-2			15.918	30	25	83.15	16.15				
WB1630084			15.918	30	30	84	16.5				
WB1630084D	885122	W2334S	15.918	30	38.9	84.4	13			12	30.4
WB1630085W	885342	WS2332-1	15.918	30	38.9	84.5	17.5				
WB163085A		WS2333	15.918	30	27	84.5	17.5			12	38
WB163085B		WS2334-6	15.918	30	27	85	17	15	14.22	12	35.1
WB163085-1	885122	W2434S	15.918	30	38.9	85	13			12	30
WB1630085-2			15.918	30	30	85	15			12.038	38
WB1630086			15.918	30	27	86	16				
WB163087		WS2340-2	15.918	30	38.86	86.5	13.5			12	31.8
WB1630088	885319	WS2346-1	15.918	30	38.9	88	18				
WB163088A		W2346-2S	15.918	30	38.9	88	14.2			12	32.5
WB163089		WS2349	15.918	30	36	88.5	19.5				
WB163089A		WS2351	15.918	30	27	89	21			12	38.1
WB163090		W2355S	15.918	30	38.9	90	15.5			12	33.8
WB163090-1		W2355-3	15.918	30	38.9	90	17				
WB163091	885477	WS2358-1	15.918	30	36	91	17	15	14.48	12	34.3
WB1630092D		WS2364S	15.918	30	38.9	92.5	25			12.038	26
WB163092	885330	W2364-5S	15.918	30	38.9	92.5	16.5			12	34.5
WB1630093		WS2366	15.918	30	38.9	93	18.5				
WB163093-1		W2366-1S	15.918	30	38.9	93	16.5			12	33.8
WB1630093D			15.918	30	38.9	93	19			12	32.5
WB163094		W2371	15.918	30	38.9	95	17.5				
WB163096	885461	W2375-3	15.918	30	38.9	95.5	14				
WB163098-3	885307	WS2385-2TJ1427	15.918	30	38.9	97.79	4				
WB1630098		WS2385	15.918	30	38.9	98	17				
WB163098-2		WS2385-8	15.918	30	38.86	98	18				

WATER PUMP BEARINGS

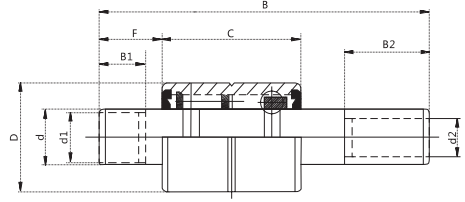
汽车水泵轴连轴承



SXM	NSK	FAG	d	D	C	B	F	d1	B1	d2	B2
WB163099	885474	W2387S	15.918	30	38.9	98.5	22.5			12	33.5
WB1630099D2			15.918	30	38.9	98.5	16.5	12	14.5	12	41
WB1630100D		W2391S	15.918	30	38.9	99.5	16.5	12	14.5	12	41.5
WB1630100-9			15.918	30	38.9	100	17			12	42
WB1630100A		W2394S	15.918	30	38.9	100.3	21.3			12	36.6
WB1630101-1			15.918	30	38.9	101	25			12	35
WB1630100			15.918	30	38.9	101	19.5				
WB1630101W	885538	W2398	15.918	30	38.9	101	27.5				
WB1630101D2	885467	W2398-1S	15.918	30	38.9	101	29	12	24	12.675	31
WB1630102	885321	W3399	15.918	30	38.9	101.5	17.5				
WB1630102	885321	W2401-3	15.918	30	38.9	102	17				
16102-22L	885147	W2403-2	15.918	30	38.9	102.39	22.2			12.675	38.1
WB1630103-6		W2405-1S	15.918	30	38.9	103	16.5			12	43.25
WB1630103	885140	W2406-1	15.918	30	38.9	103	23.5				
WB1630103-1			15.918	30	38.9	103	28				
WB1630103-2		W2407-4S.T2658	15.918	30	38.86	103.4	19.6				
WB1630104D	885356	W2407S	15.918	30	38.9	103.51	19.5			12	42.01
WB1630105W	885159	W2414-2	15.918	30	38.9	105.18	24				
WB1630105C	BWF30-15-A-RRG	W2415-1S	15.918	30	38.9	105.4	23.6			12	39.6
WB1630105	885329	W2415-1	15.918	30	38.9	105.4	20.3				
WB1630106-3		W2416.T1447	15.918	30	38.9	105.5	32				
WB1630106D			15.918	30	38.9	105.5	16	12	14.5	12	48
WB1630106-2		WS2417-1.T3429	15.918	30	38.86	106	26				
WB1630106-1		W2417S	15.918	30	38.9	106	30			12	33.5
WB1630106	885097	W2417-2	15.918	30	38.9	106	20.5				
WB1630106A		W2418-3S	15.918	30	38.9	106	18.5			12	41
WB1630107			15.918	30	38.9	106.5	19			12	46.5
WB1630107-1		W2420-1S	15.918	30	38.9	106.7	20.6			12	43
WB1630109W	885111D	W2428-1	15.918	30	38.9	109	27.5				
WB1630109D		W2431-2S	15.918	30	38.9	109.5	25			12	42.5
WB1630109	885107B	W2431	15.918	30	38.9	109.5	14.5				
WB1630110			15.918	30	52	109.5	17.7				
WB1630110-3	885305	W2432	15.918	30	38.9	110	23.75				
WB1630110-1	885332	W2434	15.918	30	38.9	110.5	21.5				
WB1630111-2	885528	W2435	15.918	30	38.9	110.5	19.5				
WB1630111D			15.918	30	38.9	110.5	21.5			12	47.5
WB1630112A	885167D	W2440-4	15.918	30	38.9	111.5	29				
WB1630112-1	885167	W2439	15.918	30	38.9	111.5	24				
WB1630112W	885098	W2440-1	15.918	30	38.9	112	27				
WB1630112	885327	W2440-5S	15.918	30	38.9	112	30			12	40.5
WB1630113		W2445-3S.T1702	15.918	30	38.9	113	30				
WB1630113A		W2445-5.T2425	15.918	30	38.9	113	33				
WB1630113W	885155	W2445	15.918	30	38.9	113	31.7				
WB1630113-1	885156	W2446	15.918	30	38.9	113.5	27.5				
Wb1630114			15.918	30	38.9	114	22			12	50
WB1630115		W2452+2.T2907	15.918	30	38.9	115	32				
WB1630115		W2453-1S	15.918	30	38.9	115	16.5	0	0	12	36.6
WB1630116-1	885337A	W2454	15.918	30	38.9	115.6	20.6				
WB1630116	885495	W2455	15.918	30	38.9	115.75	26.85				
WB1630116A	885162	W2456	15.918	30	38.9	115.8	28				
WB1630119	885118	W2468	15.918	30	38.9	119	37.3				
WB1630119W	885135S	W2470	15.918	30	38.9	119.5	32.5				
WB1630120	885221	W2472	15.918	30	38.9	120	36.6				
WB1630121	885222	W2475	15.918	30	38.9	120.5	38				
WB1630121W	885105	W2476	15.918	30	38.9	120.65	29.36				

WATER PUMP BEARINGS

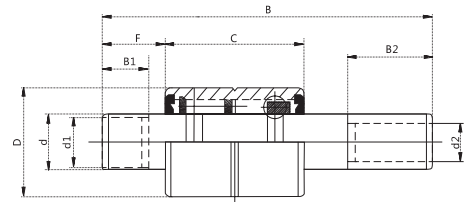
汽车水泵轴连轴承



SXM	NSK	FAG	d	D	C	B	F	d1	B1	d2	B2
WB1630122W	885238	W2481-1	15.918	30	38.9	121.5	31.5				
WB1630122D	885476	W2481	15.918	30	52	122	34				
WB1630122W	885168C	W2481-1	15.918	30	38.9	122.25	28.5				
WB1630123-3			15.918	30	38.9	122.4	28.5			12	35
WB1630122		W2482S.J3177	15.918	30	57.1	122.5	26.5				
WB1630123		W2485	15.918	30	38.9	123	19.5				
WB1630123-1		WS2485	15.918	30	38.9	123	25.4				
WB1630124			15.918	30	38.9	123.5	28.5				
WB1630124-1	885100B	W2486-2	15.918	30	38.9	123.5	32				
WB1630124D	885326	W2488S	15.918	30	38.9	124	42			12	40.5
WB1630124W	885245	W2484	15.918	30	38.9	124.41	40				
WB1630128	885141	W2503	15.918	30	38.9	127.8	27				
WB1630128A	885151B	W2503-6	15.918	30	38.9	127.8	44.5				
WB1630129			15.918	30	38.9	128.8	28.5				
WB1630129W	885169	W2507	15.918	30	38.9	129	32				
WB1630132W	885104A	W2520	15.918	30	38.9	132	50.5				
WB1630134W	885113B	W2527	15.918	30	38.9	134	42.5				
WB1630135	885158AA	W2531-1	15.918	30	38.9	135	33				
WB1630135W	885437S	W2532	15.918	30	38.9	135	51				
WB1630136			15.918	30	46	136.25	28.5				
WB1630136W	885158P	W2537	15.918	30	38.9	136.4	39				
WB1630138W	885158	W2543	15.918	30	38.9	138	58.5				
WB1630139		W2547	15.918	30	38.9	139	23.1				
WB1630140	885603	W2548-1	15.918	30	38.9	139.5	35				
WB1630141W	885248	W2555	15.918	30	38.9	141	49				
FPS582			15.918	30	57.1	141.8	32.1				
	885458		15.918	30	57.1	141.8	32.1				
WB1630143			15.918	30	57.1	142.8	28.5				
WB1630143	885144	W2562	15.918	30	38.9	143	40				
WB1630146A	885694	W2575-2	15.918	30	38.9	146	61.7				
WB1630149		W2585.T2368	15.918	30	38.9	149	40				
WB1630150	885116C	W2590-2	15.918	30	38.9	150	35.1				
WB1630152		W2596.T2556	15.918	30	38.9	151.6	24				
WB1630160W	885094S	W2628-1	15.918	30	38.9	159.5	76.2				
WB1630162	885117	W2637	15.918	30	38.9	161.8	58.4				
WB1630162		W2639.T2358	15.918	30	38.9	162.3	41			12	
WB1630168		W2662.T1652	15.918	30	38.9	168.5	58.5				
WB1630108			15.918	35	38.9	108	25				41
WB1630122W	885168H	W2481-1	15.918	30	38.9	122.25	28.5				
WB1630122W	885168AD	W2481-5	15.918	30	38.9	122.25	40				
WB1630128W	885166K	W3503-5	15.939	30	38.9	127.79	31				
WB1630132W	885521	W3520-2	15.939	30	38.9	132.13	40				
WB1630133W	885611	W3522-1	15.939	30	38.9	132.64	30				
WB1630154W	885613	W3607-1	15.939	30	38.9	154.23	29.8				
WB1630091-1			16	30	38.9	91				12	35.5
WB1630092	6-330802		16	30	38.9	92	15.6				
WB1736091D	BWF36-1	542021C	17	36	38.9	90.7	14			15	34
WB1736094D			17	36	38.9	94	14			12	38
WB1730075			17.2	30	23	75	14	12	35.5		
WB1730082			17.2	35	30	82	14	12	37		
WB1835086D		BWF35-26X-A-R4	17.5	30	30	85.5	15.5			12	37.5
WB183070		WS2275.T27 37	17.899	35	14	70	20.5				
WB1835100			18	35	46	100	17	15.918	15	12	35
WB1835101			18	35	38.9	101	16.5	15.918	15	12	43.6
WB1835101D2			18	35	38.9	101	25	15.918	23.5	12	34.5

WATER PUMP BEARINGS

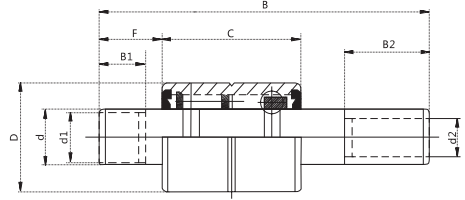
汽车水泵轴连轴承



SXM	NSK	FAG	d	D	C	B	F	d1	B1	d2	B2
WB1835112D		BWF35-14R	18	35	26.5	112	26.5				
WB1835119D		BWF35-3BR	18	35	26.5	119	26.5				
WB1835143			18	35	46	143.2	53.7	15.918	8.7	12	50.7
WB193864	885803	WK2250.T1428	18.961	38.1	54	63.5	4.8				
WB1938091	885841	WK2357/803	18.961	38.1	54	100	3.58				
WB1938113D2		WS2443	18.961	38.1	54	112.67	28.6	15.918	24.13	15.918	39.62
WB1938115	885830	WK2452.T.1481	18.961	38.1	54	115	29				
WB1938117D		WS2460	18.961	38.1	54	117	24.5			15.918	47.24
WB1938117	885786	WK2461	18.961	38.1	54	117.3	13.5	0	0	15.918	47
WB1938119D		WS2468-2	18.961	38.1	54	119	26.5			15.918	48.01
WB1938120	885825BB	WK2474-2	18.961	38.1	54	120.5	26	0	0	15.918	38
WB1938121D2		WS2475	18.961	38.1	54	120.5	33.35	15.918	16	15.918	43.26
WB1938123		WK2484-1	18.961	38.1	54	123	31	15.918	14	15.918	33
WB1938125		WK2493	18.961	38.1	54	125	25.5	0	0	15.918	42
WB1938126	885832	WK2494-1	18.961	38.1	54	125.5	26.4	15.918	22.86	15.918	41
WB1938126A	885832	WK2495	18.961	38.1	54	125.5	30.5	15.918	27.5	15.918	37
WB1938126D2		WK2495	18.961	38.1	54	125.73	30.86	15.918	26	15.918	37.34
WB1938127	885811	WK2500-2	18.961	38.1	54	127	31			15.918	38
WB1938127D	885775SC	WK2500-2	18.961	38.1	54	127	31.37			15.918	39.29
WB1938127D2		WK2500A	18.961	38.1	54	127	26.67	15.918	11.68	15.918	43.82
WB1938127D	882869	WK2501	18.961	38.1	54	127.3	29.2			15.918	40
WB1938128	885811A	WK2501-3	18.961	38.1	54	127.5	31	15.918	13.7	15.918	39.5
WB1938129D2	885852	WK2509	18.961	38.1	54	129.29	35.56	15.918	15.37	15.918	37.41
WB1938132		WK2520	18.961	38.1	54	132	29.7	15.918	12	15.918	43
WB1938134B	885781	WK2528-2	18.961	38.1	54	134	30			15.918	47
WB1938135		WK2531	18.961	38.1	54	135	37.3			15.918	41
WB1938135A	885781	WK2531-2	18.961	38.1	54	135	37.3	15.918	17	15.918	41
WB1938135D	885735	WK2531	18.961	38.1	54	135	37.34			15.918	41.02
WB1938136D	885737	WK2528-2	18.961	38.1	54	135.6	32			15.918	47.24
WB1938136D2	885810	WK2537-1	18.961	38.1	54	136.5	36	15.918	12.32	15.918	43.43
WB1938137D2	885870	WK2538	18.961	38.1	54	136.65	36.7	15.918	30.7	15.918	42.42
WB1938137A	885821	WK2538-2	18.961	38.1	54	136.7	40.4	15.918	14.2	15.918	39
WB1938140	885821	WK2550	18.961	38.1	54	139.7	35.6	15.918	15.5	15.918	48
WB1938140D2	885771	WK2550	18.961	38.1	54	139.7	35.59	15.918	15.3	15.918	47.83
WB1938140A		WK2553	18.961	38.1	54	140.5	32.8	15.918	13.7	15.918	51
WB1938141D	885720	WK2553-2	18.961	38.1	54	140.5	39.62			15.918	43.82
WB1938142D	885719	WK2558	18.961	38.1	54	141.7	44			15.918	40.77
WB1938142		WK2559-2	18.961	38.1	54	142	31.8	0	0	15.918	52
WB1938143D2	885851	WK2560	18.961	38.1	54	142.62	39.5	15.918	30.86	15.918	45.59
WB1938143D	885815A	WK2564	18.961	38.1	54	143.28	35.33			15.918	49.23
WB1938143D2	885862B	WK2564-6	18.961	38.1	54	143.48	30.84	15.918	12.24	15.918	50.55
WB1938144D	885777	WK2568	18.961	38.1	54	144.48	29.01			15.918	58.37
WB1938146D2	885760	WK2575-4	18.961	38.1	54	146	36.32	15.918	30	15.918	51.56
WB1938146A	885802B	WK2575	18.961	38.1	54	146	44.5			15.918	44.5
WB1938146B	885747	WK2575-1	18.961	38.1	54	146	36.3	15.918	13.716	15.918	51
WB1938146	885760	WK2575-4	18.961	38.1	54	146	36.3	15.918	30.5	15.918	51
WB1938149A	885740	WK2586	18.961	38.1	54	149	41.1	15.918	35.5	15.918	50
WB1938149D	885801	WK2587	18.961	38.1	54	149	53.5			15.918	38.1
WB1938151D	885764	WK2592	18.961	38.1	54	150.5	35			15.918	58.29
WB1938151B		WK2596-1	18.961	38.1	54	151.4	31	15.918	12.2	15.918	55
WB1938152		WK8600.T1617	18.961	38.1	54	152.4	35				
WB1938152	885844	WK2600	18.961	38.1	54	152.4	35.6	15.918	15.24	15.918	60
WB1938153D2	885857	WK2602	18.961	38.1	54	153	53.59	15.918	28.5	15.918	41.78
WB1938153D2	885865A	WK2602-2	18.961	38.1	54	153	46.39	15.918	28.5	15.918	43.26
WB1938153D	885807C	WK2604	18.961	38.1	54	153.5	45.75			15.918	50.55

WATER PUMP BEARINGS

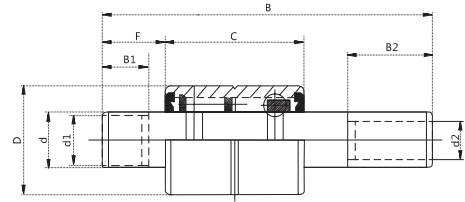
汽车水泵轴连轴承



SXM	NSK	FAG	d	D	C	B	F	d1	B1	d2	B2
WB1938154	885795SC	WK2607A	18.961	38.1	54	154	29.5	15.918	9	15.918	57
WB1938157	885746	WK2616-2	18.961	38.1	54	156.7	39.6			15.918	60
WB1938158		WK2623	18.961	38.1	54	158.2	43.2	15.918	14.2	15.918	57
WB1938161		WK2634-1	18.961	38.1	54	161	46.7	15.918	33.5	15.918	56
WB1938162D2	885858	WK2637	18.961	38.1	54	162	35.56	15.918	15.3	15.918	70.05
WB1938162	885858	WK2637	18.961	38.1	54	162	35.6	15.918	15.3	15.918	70
WB1938168	885820	WK2662	19	38.1	41	168	50.8				
WB1938102	885881	WS2401-3	19	38.1	46	102	14			15.918	44.7
WB1938109			19	38.1	41	109	43.8	18	17.2	13	41.55
WB1938113		WS2443	19	38.1	41	112.8	28.7	15.918	25.4	15.918	39.6
WB1938113D2	885841-OS2	WS6443	19	38.1	41	112.8	28.7	15.918	25.4	15.969	39.6
WB1938117D2		WS6460.T2117	19	38.1	41	117	24.5				
WB1938117A		WS2460	19	38.1	41	117	24.5			15.918	43
WB1938119	885786	WS2468-2	19	38.1	41	119	26.7			15.918	48
WB1938119D2			19	38.1	54	119	30.4	15.918	26.5	12	44.5
WB1938120D2		WK6474-2	19	38.1	54	120.5	26			15.918	39
WB1938123D2		WK6484-1	19	38.1	54	123	31	15.918	14	15.918	33
WB1938125D2		WK6493	19	38.1	54	125	31.5			15.918	42
WB1938126AD2	885811-OS2	WK6495	19	38.1	54	125.7	26.7	15.918	27.5	15.918	37
WB1938126			19	38.1	54	126	27.5			15.918	10.5
WB1938127D2	885775SC-OS2	WK6500-2	19	38.1	54	127	31			15.918	38
WB1938127AD2	885775SC-OS	WK6500B	19	38.1	54	127	29.7	15.918	9	15.918	44
WB1938127D2-1	885868SCOS	WK6500-B	19	38.1	54	127	26.67	15.939	11.7	15.989	44
WB1938127D2-2	885869OS	WK6501-3B	19	38.1	54	127.5	31	15.918	14.5	15.969	39.5
WB1938127D2-3	885811AOS	WK6509B	19	38.1	54	129	35.5	15.918	15.4	15.969	37.5
WB1938130		WS2509	19	38.1	54	129.5	33	17	30.5	17	40
WB1938132D2	885852OS	WK6520B	19	38.1	54	132	29.85	15.918	12.3	15.969	43
WB1938132D2	885852-OS2	WK6520B	19	38.1	54	132	37.3	15.918	12	15.918	43
WB1938134			19	38.1	54	134	30			15.918	47.5
WB1938135AD2		WK6531-3	19	38.1	54	135	30			15.918	48
WB1938136D2	885735-OS2	WK6534	19	38.1	54	135.5	32			15.918	47
WB1938136	885735	WK2534	19	38.1	54	135.5	31.8			15.918	47
WB1938137	885737	WK2537-1	19	38.1	54	136.5	36.3	15.918	12.5	15.918	43
WB1938137AD2	885810-OS2	WK6538	19	38.1	54	136.5	36.5	15.918	34	15.918	42
WB1938137BD2	885870-OS	WK6538-2B	19	38.1	54	136.7	40.4	15.918	14.2	15.918	39
WB1938140D2	885821-OS	WK6550B	19	38.1	54	139.5	35.5	15.918	15.5	15.918	48
WB1938141D2	885720-OS2	WK6553-2	19	38.1	54	140.7	39.6			15.918	44
WB1938142AD2	885815-OS2	WK6559-2	19	38.1	54	142	31.8			15.918	52
WB1938142CD2		WK6560-2B	19	38.1	54	142.5	33.5	15.918	15.24	15.918	51
WB1938142A	885851	WK2560	19	38.1	54	142.5	39.5	15.918	36	15.918	45
WB1938143D2	885815A-OS	WK6564	19	38.1	54	143.3	35.6			15.918	49
WB1938143D2-1	885862BOS	WK65654-6	19	38.1	54	143.5	31	15.918	12.24	15.918	50.5
WB1938144D2		WK6564-6B	19	38.1	54	143.5	30.7	15.918	12.192	15.918	51
WB1938144	885862B	WK2564-6	19	38.1	54	143.5	30.7	15.918	12.192	15.918	51
WB1938146AD2	885818-OS2	WK6574-2	19	38.1	54	145.8	44.7	0	0	15.918	43
WB1938146AD2-1	885760OS	WK6575-4	19	38.1	54	146	36.32	15.969	30.1	15.969	51.5
WB1938146D2	885760-OS	WK6575-4	19	38.1	54	146.1	36.3	15.918	31.75	15.918	51
WB1938149AD2		WK6586	19	38.1	54	148.8	40.9	15.918	35.3	15.918	50
WB1938149D2	885801-OS2	WK6587	19	38.1	54	149.1	53.3	0	0	15.918	38
WB1938150			19	38.1	54	150	32.5	17	30	15.918	60.5
WB1938151AD2	885764-OS2	WK6592	19	38.1	54	150.6	35.1	0	0	15.969	58
WB1938151D2		WK6596-1B	19	38.1	54	151.4	30.7	15.918	12.192	15.918	65
WB1938152D2	885775SC-OS	WK6600B	19	38.1	54	152.4	35.6	15.918	15.24	15.918	60
WB1938152D2-1	885844OS	WK6600B	19	38.1	54	152.4	35.56	15.918	15.27	15.969	58.39
WB1938153CD2	8855865A-OS	WK6602-2B	19	38.1	54	152.9	46.5	15.918	28.448	15.918	43

WATER PUMP BEARINGS

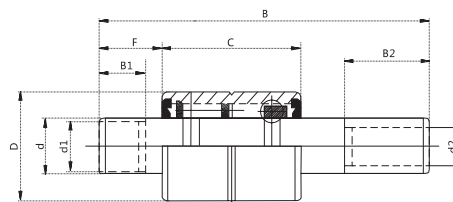
汽车水泵轴连轴承



SXM	NSK	FAG	d	D	C	B	F	d1	B1	d2	B2
WB1938153D2	885857-OS	WK6602B	19	38.1	54	152.9	53.6	15.918	28.448	15.918	42
WB1938153D2-1	885865AOS	WK6602-2B	19	38.1	54	152.91	46.36	15.918	28.58	15.969	43.26
WB1938153D2-2	885857OS	WK6602B	19	38.1	54	152.91	53.6	15.918	28.45	15.969	41.78
WB1938153	885807C-OS2	WK6604	19	38.1	54	153.4	45.7			15.918	50
WB1938154		WK6607B	19	38.1	54	154.2	29.7	15.918	11.684	15.918	57
WB1938154D	885795SCOS	WK6607B	19	38.1	54	154.23	29.77	15.969	8.636	15.989	57.15
WB1938156D2	885746-OS2	WK6616-2	19	38.1	54	156.5	39.6	0	0	15.918	60
WB1938158D2		WK6622B	19	38.1	54	158	46.7	15.918	14.7	15.918	53
WB1938158D2		WK6623B	19	38.1	54	158.2	43.2	15.918	14.2	15.918	57
WB1938161D2	885796-OS	WK6634-1	19	38.1	54	161	46.7	15.918	33.3	15.918	56
WB1938162D2	885858OS	WK6637B	19	38.1	54	162	35.5	15.918	15.3	15.969	70
WB1938175D2		WK6688	19	38.1	54	174.8	52.6	15.918	14.224	15.918	65
WB203696		WS2377-2	20	36	37	96	17	15.918	17.02	15.918	41.7
WB2036145			20	36	48	145	33.5	15	15	15	61.5
WB2036157			20	36	48	157	33.5	15	15	15	73
WB2047111		WS2436	20	47	47.5	110.5	15			15.918	47.8
WB2540114			24.5	40	40	114	19			12	53
WB2552104			25	47	47	103.5	12.5			12	42
Wb3055130		WS2511	30	47.5	47.5	130	32			15	48
WR122485	664101	WNS2332	12	24	27	84.6	20.5				
WR1224085			12	24	27	85	37				
WR153087		WNS2344-2	15	30	36	87.5	16.5				
WR153090		WNS2354-2	15	30	38.9	89.9	18			12	31.0
WR1530104		WNS2411	15	30	38.9	104.4	26.2			12	36.6
WR1530106		WNS2417	15	30	38.9	106	27.7			12	36.6
WR1530109			15	30	52	109	19			12	35
WR1530109			15	30	52	109	19			12	35
WR1530119		WNS2466	15	30	52	118.6	26.9			12	36.6
WR1530125		WNS2493	15	30	52	125.2	17.8				
WR163068		WNS2269	15.918	30	38.9	68.3	25.1				
WR163067		WNS2299-2	15.918	30	27	75.9	16.3			12	30.7
WR163076-1		WNS6299-2	15.918	30	27	76	16.5			12	30.7
WR1630076			15.918	30	27	76	16.3			12	30.7
WR163079		WNS2315J3413	15.918	30	30	79.2	13.5				
WR163086		WNS2337-1	15.918	30	30	83	14.5			12	39.5
WR1630083			15.918	30	33	83	15.5			12	35
WR1630084			15.918	30	27	84	17			12	38.2
WR1630084-1			15.918	30	30	84	15.8			12	36.5
WR1630085			15.918	30	30	85	17			12.038	36
WR1630087C-2			15.918	30	33	86.5	13.5			12	32.7
WR1630087C			15.918	30	27	86.5	13.5			12	32.7
WR163087A		WNS2340	15.918	30	30	86.5	13.5			12	32.0
WR163088		WNS2348-5	15.918	30	30	88.4	19.5			12	39.6
WR163090		WNS2353	15.918	30	38.9	89.7	16.5			12	39.6
WR1630091-2			15.918	30	38.9	90.5	14.81			12	34.5
WR163091		WN2358-1S	15.918	30	38.9	91.2	13.5			12	36.6
WR163092		WN2364-7S	15.918	30	27	92.5	15			12	36.3
WR1630093-1			15.918	30	32	92.5	15.5			12	36.5
WR163093		WN2366-4	15.918	30	38.9	93	18.5				
WR1630095W	665343	WN2375-3	15.918	30	38.9	95.45	14.25				
WR163096-1		WN2375-4S	15.918	30	38.9	95.5	14.2			12	40.4
WR163096	665343	WN2375-3	15.918	30	38.9	95.5	14.2				
WR163099		WN2388-2S	15.918	30	38.9	98.8	18.5			12	39.4
WR1630100		WN2393-2S.T2874	15.918	30	38.9	99.8	10.9				
Wr1630101	665331	WN2397S	15.918	30	38.9	100	24.9			12	34.5

WATER PUMP BEARINGS

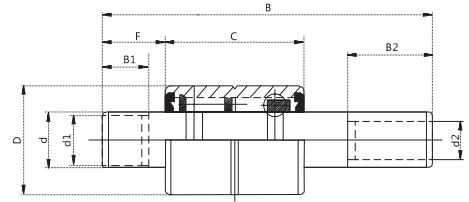
汽车水泵轴连轴承



SXM	NSK	FAG	d	D	C	B	F	d1	B1	d2	B2
WR1630101-1		WNS2400.T1451	15.918	30	38.9	101.3	19.6				
WR1630102		WN3399-2S	15.918	30	38.9	101.6	17.5			12	43.2
WR1630102-1		WN2401-5	15.918	30	38.9	102	17				
WR1630103		WN2406-9.J2422	15.918	30	38.9	103	28				
WR1630103-1		WN2405S	15.918	30	38.9	103	16.5			12	45.5
WR1630103A		WN2407-5S.T3377	15.918	30	38.9	103.5	19.6				
WR1630104		WN2410	15.918	30	38.9	104	26				
WR1630105		WN2413-2S	15.918	30	38.9	105	30.7			12	32.0
WR163010-1	665329	WN2415-1	15.918	30	38.9	105.4	20.3				
WR1630106		WN2419S	15.918	30	38.9	106.4	22			12	43.7
WR1630108		WNS2426	15.918	30	38.9	108	18.5			12	49.0
WR1630110W	665332	WN2434	15.918	30	38.9	110.4	21.4				
WR1630110		WN2434	15.918	30	38.9	110.5	21.3				
WR1630112		WN2438.T3263	15.918	30	38.9	111.5	24				
WR1630114		WN2447	15.918	30	38.9	113.8	36.1				
WR1630114A		WN2448-1	15.918	30	38.9	114	19.1				
WR1630114B		WN2450-2	15.918	30	38.9	114.3	32				
WR1630115W	665662	WN2452-2	15.918	30	38.9	114.81	32				
WR1630115	665337ATL	WN2554	15.918	30	38.9	115.49	20.5				
WR1630116A		WN2456-1	15.918	30	38.9	116	28				
WR1630117	665430S	WN2462-1	15.918	30	38.9	117	34				
WR1630117W	665430S	WN2462-1	15.918	30	38.9	117	33.5				
WR1630117		WN2461-1S	15.918	30	38.9	117.3	18.3			12	58.2
WR1630119	665333	WN2468-2	15.918	30	38.9	119	18				
WR1630119W	665118	WN2468	15.918	30	38.9	119	37.5				
WR1630121W	665491	WN2476	15.918	30	38.9	120.5	28				
WR1630121A		WN2476	15.918	30	38.9	120.9	29.5				
WR1630122W	665238	WN2478	15.918	30	38.9	121.62	31.42				
WR1630122		WN2479S	15.918	30	38.9	121.9	31.5			12	49.5
WR1630124W	665100B	WN2487	15.918	30	38.9	123.67	31.75				
WR1630126		WN2497	15.918	30	38.9	126.2	36.8				
WR1630128			15.918	30	38.9	127.8	23.5			12.038	48.5
WR1630133	665113	WN2521	15.918	30	38.9	132.56	40.89				
WR1630136W	665596	WN2537	15.918	30	38.9	136.4	39.12				
WR1630139B		WN2547	15.918	30	38.9	138.9	23.1				
WR1630139W	665603	WN2548	15.918	30	38.9	139.32	35.05				
WR1630139A	665603	WN2548	15.918	30	38.9	139.4	35				
WR1630141W	665458	WN2556	15.918	30	38.9	141	38.5				
WR1630102A		WN3399	15.939	30	38.9	101.5	17.5				
WR1630132		WN3520-2	15.939	30	38.9	132	40				
WR1630154-OS	665613	WN3607-1	15.939	30	38.9	154.2	29.7				
WR1835101D2			18	35	46	100.99	25	15.918	23.5	12	34.75
WR1835112D2		RWF35-1A-A-Rr121	18	35	38.84	112	30	15.918	40.5	12	28.5
WR1835114D2		RWF35-3-A-R1	18	35	46	114	27	15.918	25	12	38.5
WR1835119D2		RWF35-5-ARR12-G-3	18	35	46	119	30	15.918	28.5	12	40
WR1835123			18	35	56	122.6	28.4			12	35.5
WR1835126D2		RWF35-19AR	18	35	56	126	28.5	15.918	26.5	12	37
WR193891	665803	WKN2357	18.961	38.1	54	91	33.3				
WR1938115		WKN2452-1	18.961	38.1	54	115	35				
WR1938115A	665853	WKN2454D	18.961	38.1	54	115.3	23.5	0	0.0	12.037	35.8
WR1935117B	665853	WKN2460D	18.961	38.1	54	117	27	15.918	8.9	12.037	33.8
WR1935120	665757	WKN2474-2	18.961	38.1	54	120.5	26			15.918	39.1
WR1938121D	665757	WKN2474-2	18.961	38.1	54	120.5	25.81			15.918	39
WR1938122		WKN2480	18.961	38.1	54	121.9	24			15.918	40.1
WR1938125	665729	WKN2493	18.961	38.1	54	125.5	29			15.918	39.1

WATER PUMP BEARINGS

汽车水泵轴连轴承



SXM	NSK	FAG	d	D	C	B	F	d1	B1	d2	B2
WR1938127		WKN2501	18.961	38.1	54	127.3	29.2			15.918	40.1
WR1938128		WKN2502	18.961	38.1	54	127.5	28			15.918	43.0
WR1938129D	665794	WKN2507	18.961	38.1	54	129.01	26.01			15.918	38.35
WR1938133		WKN2524	18.961	38.1	54	133.4	32.5			15.918	43.9
WR1938135		WKN2530	18.961	38.1	54	134.6	31.8	15.918	7.1	15.918	44.7
WR1938135B	665879	WKN2531-3	18.961	38.1	54	134.9	30			15.918	48.3
WR1938135D	665781	WKN2531	18.961	38.1	54	135	37.5			15.918	41
WR1938136	665735B	WKN2534	18.961	38.1	54	135.6	32			15.918	47.2
WR19358137	665816	WKN2541-1	18.961	38.1	54	137.4	30.7	15.918	12.2	15.918	39.6
WR1938138		WKN2544-2	18.961	38.1	54	138.2	35.8			15.918	36.8
WR1938142	665705	WKN2558-2	18.961	38.1	54	141.7	36.8			15.918	46.7
WR1938142D2	665792	WKN2560-2	18.961	38.1	54	142.37	33.53	15.918	15.24	15.918	50.55
WR1938144		WKN2564-6	18.961	38.1	54	143.5	30.7	15.918	12.2	15.918	50.5
WR1938146A	665760	WKN2575-4	18.961	38.1	54	146.1	36.3	15.918	30.5	15.918	51.3
WR1938149		WKN2588	18.961	38.1	54	149.4	36.8			15.918	54.4
WR1938151D	665764	WKN2592	18.961	38.1	54	150.5	35.05			15.918	58.29
WR1938151A	665714	WKN2592-2	18.961	38.1	54	150.6	35.1	15.918	13.0	15.918	58.4
WR1938151		WKN2592	18.961	38.1	54	150.6	35.1			15.918	61.5
WR1938151B	665877A	WKN2596-1	18.961	38.1	54	151.4	31	15.918	12.2	15.918	55.4
WR1938153		WKN2602-2	18.961	38.1	54	152.9	46.2	15.918	29.0	15.918	43.2
WR1938153D	665807	WKN2604	18.961	38.1	54	153.42	45.75			15.918	50.55
WR1938156B	665746	WKN2616	18.961	38.1	54	156.5	39.6	0	0.0	0	59.9
WR1938157D	665746	WKN2616	18.961	38.1	54	156.59	39.62			15.918	59.82
WR1938158	665812	WKN2622	18.961	38.1	54	158	46.7	15.918	14.7	15.918	52.8
WR1938158B	665707	WKN2623	18.961	38.1	54	158.2	43.2	15.918	14.2	15.918	56.6
WR1938158D2	665707	WKN2623	18.961	38.1	54	158.24	43.18	15.918	14.1	15.918	56.64
WR1938159A		WKN2624	18.961	38.1	54	158.8	35.1	15.918	13.0	15.918	62.0
WR1938161	665761	WKN2631	18.961	38.1	54	160.5	44.5	0	0.0	12.037	58.9
WR1938161D2	665796	WKN2634-1	18.961	38.1	54	161.04	46.74	15.918	33.15	15.918	55.88
WR1938175D2	665813	WKN2688	18.961	38.1	54	174.75	52.53	15.918	14.1	15.918	63.75
WR1938175C		WKN2688-7D	18.961	38.1	54	174.8	52.6	0	0.0	12.037	42.9
WR1938175A	665824	WKN2688-1	18.961	38.1	54	174.8	35.1	15.918	14.2	15.918	81.3
WR1938175	665813	WKN2688	18.961	38.1	54	174.8	53.6	15.918	14.2	15.918	63.8
WR1938115-1		WKN6454D	18.961	38.1	54	115.3	23.4	0	0.0	12.088	35.8
WR1938120-1		WKN6474-2	19	38.1	54	120.4	25.9	0	0.0	15.977	39.1
WR1938136-1		WKN6534	19	38.1	54	135.6	32	0	0.0	15.977	47.2
WR1938142-1		WKN6560-2B	19	38.1	54	142.5	33.5	15.918	15.2	15.918	50.5
WR1938146-1		WKN6575-1B	19	38.1	54	146.1	36.3	15.918	13.7	15.977	51.3
WR1938151-1		WKN6592-2B	19	38.1	54	150.6	35.1	15.918	13.0	15.977	58.4
WR1938158		WKN6623B	19	38.1	54	158.2	43.2	15.918	14.2	15.977	56.6
WR1938161		WKN6634-1	19	38.1	54	161	46.7	15.918	8.1	15.977	55.9
WR1938161D2	665798OS	WKN6634-1B	19.012	38.1	54	161.04	46.74	15.969	33.15	15.969	55.88
WR2036122		WNS2482	20	36	52	122.4	29	15	28.7	12.037	36.6
WR2036131		WNS2514	20	36	52	130.8	33	15	32.8	15.001	42.7
WR2547136		WNS2535-1	25	47	60	149	32	19	30.0	15.918	54.0
WR2555127A		WNS2500-1	25	55	60	127	25	0	0.0	15	40.9
WR2555127		WNS2500	25	55	60	127	25	0	0.0	15.918	40.9
WR2548136D2	665951		25.4	47.625	54	136	23.5	18.961	21.97	15.918	53.62
WR2548178D	665913		25.4	47.625	69.85	177.8	57.15			15.918	48.26
WR255157		WNS2616-6	25.4	55	60	157	35.5	19	12.7	15.918	57.9
WR3356216			33	56	70	216	82	20	45	25	33